



WROCLAW

MEDICAL UNIVERSITY

HORTUS BOTANICUS PLANTARUM MEDICINARUM
UNIVERSITATIS MEDICAE WRATISLAVIENSIS

ISSN 1733-9006

INDEX SEMINUM 2025

qui ex Horto Botanico nostro Plantarum Medicinarum
pro mutua commutatione offert anno 2025



WROCLAW 2025

**BOTANICAL GARDEN OF MEDICINAL PLANTS
DEPARTMENT OF PHARMACEUTICAL BIOLOGY AND BIOTECHNOLOGY
WROCLAW MEDICAL UNIVERSITY**

51-601 Wrocław, al. J. Kochanowskiego 10–14
tel. (+48 71) 348 28 29; (+48 71) 348 29 42
e-mail: ogrod@umw.edu.pl

HEAD: PROF. ADAM MATKOWSKI

Year of establishment:	1946	
Geographical position:	latitude	51°07'03"N
	longitude	17°04'27"E
	altitude	117 m a.s.l.
Area of the garden:	3,07 ha	
Area of the glasshouses:	350 m²	

Seed collectors & co-authors

Klemens Jakubowski, Małgorzata Stachura, Marek Surma, Grzegorz Wójcik

Text editors

(including meteorological data processing and compilation)

Klemens Jakubowski, Grzegorz Wójcik

METEOROLOGICAL DATA FOR WROCLAW

Weather station: Wrocław-Strachowice (IMGW-PIB)

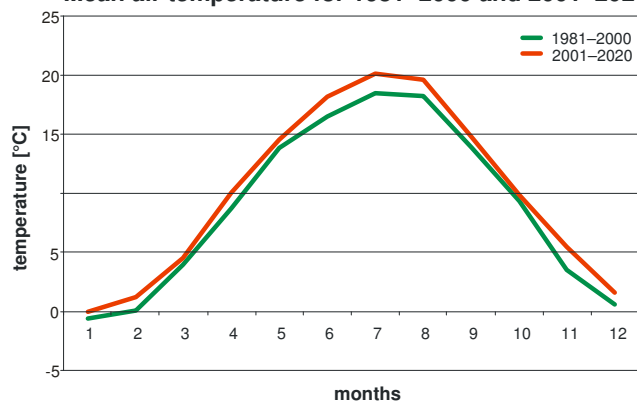
Mean air temperature [°C] for the periods 1981–2000 (A) and 2001–2020 (B)

	Months												Year
	I	II	III	IV	V	VI	VII	VIII	IX	X	XI	XII	Σ
A	-0.6	0.1	4.0	8.7	13.9	16.5	18.5	18.2	13.9	9.3	3.5	0.5	8.87
B	0.0	1.2	4.5	10.0	14.5	18.1	20.1	19.6	14.8	9.8	5.5	1.6	9.98

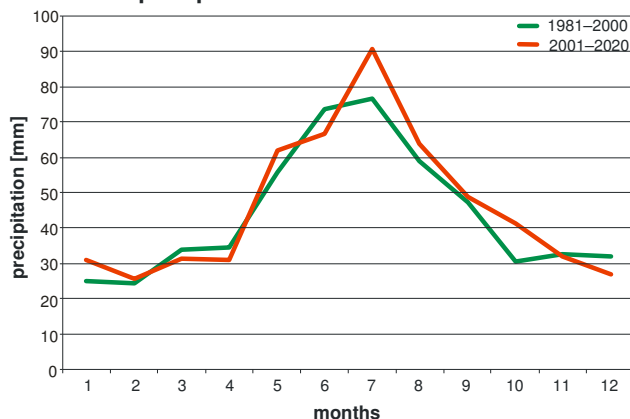
Mean precipitation [mm] for the periods 1981–2000 (A) and 2001–2020 (B)

	Months												Year
	I	II	III	IV	V	VI	VII	VIII	IX	X	XI	XII	Σ
A	25	24	33	34	56	74	77	59	47	30	33	32	524
B	31	26	31	31	62	67	91	64	49	41	32	27	552

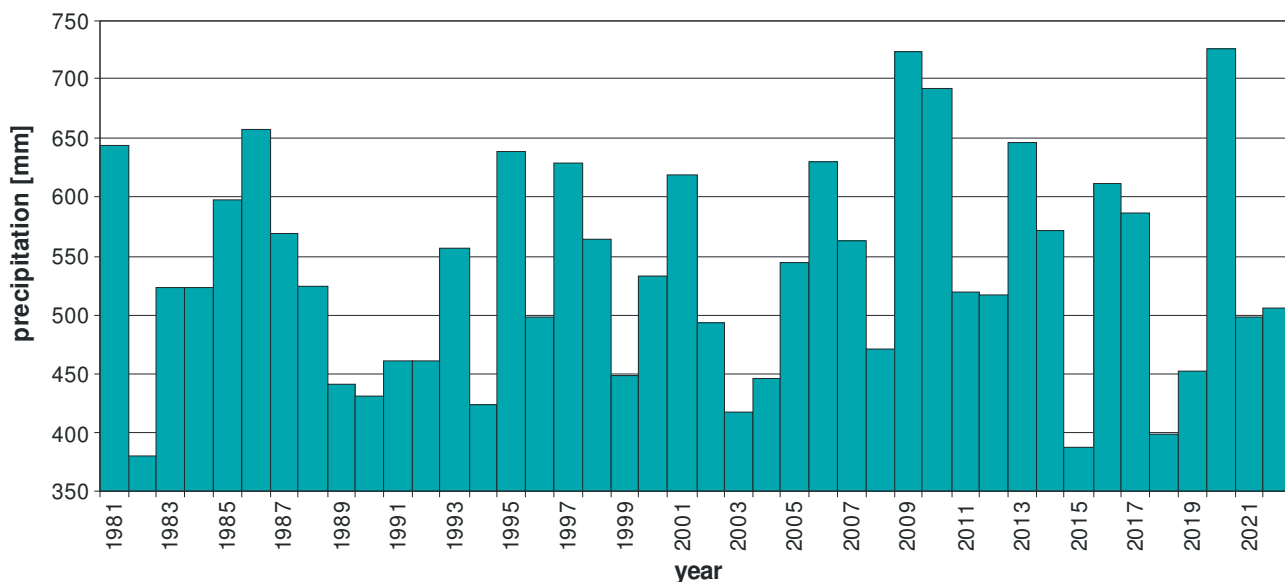
Mean air temperature for 1981–2000 and 2001–2020



Mean precipitation for 1981–2000 and 2001–2020



Annual sum of precipitation 1981–2022



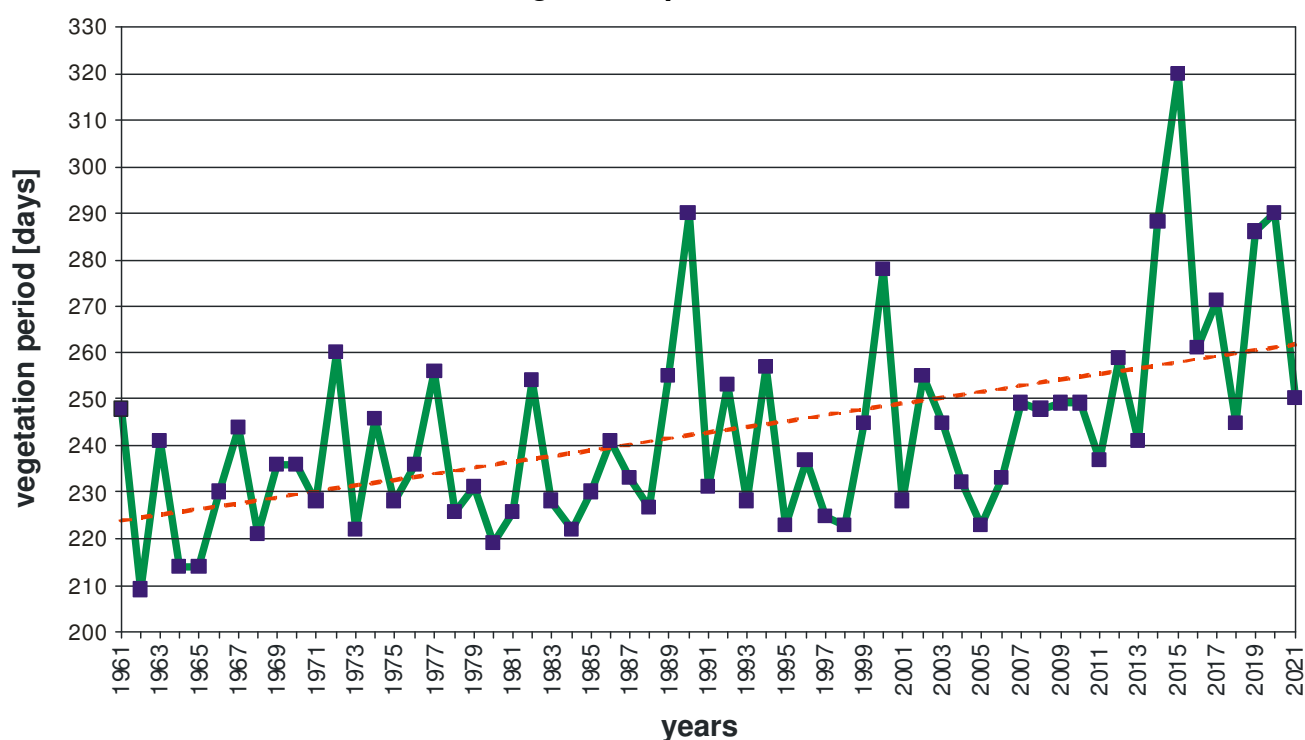
Extremes of air temperature from 1951 to 2022

absolute maximum **37.9°C** (08 Aug 2015)
 absolute minimum **-32.0°C** (11 Feb 1956)

Selected climatic features for the periods 1981–2000 and 2001–2020

	1981–2000	2001–2020
Mean annual air temperature [°C]	8.87	9.98
Mean air temperature – January [°C]	-0.6	0.0
Mean air temperature – July [°C]	18.5	20.1
Absolute maximum air temperature [°C]	37.4	37.9
Absolute minimum air temperature [°C]	-29.5	-22.5
Annual sum of precipitation [mm]	524	552
Mean annual vegetation period [days]	240	255

Annual vegetation period 1961–2021



Notes:

Vegetation period as defined according to the number of days with continued average daily air temperature of $\geq 5,0^{\circ}\text{C}$ (heights 2 m above the ground).

Data source: IMGW-PIB (<http://www.imgw.pl>, access: 08.12.2023)

SEMINA PLANTARUM IN HORTO CULTARUM

Omnia semina in anno 2025 collecta.

Semina proveniunt pollinationem apertam. Hybridarum excludi non potest.

Amaranthaceae

1. *Amaranthus caudatus* L.
2. *Amaranthus cruentus* L. 'Golden Giant'
3. *Amaranthus cruentus* L. 'Hot Biscuits'; XX-0-ZAVRT-15078

Amaryllidaceae

4. *Allium ascalonicum* L.
5. *Allium chinense* G. Don; XX-0-TEBLI-01484
6. *Allium fistulosum* L.
7. *Allium obliquum* L.
8. *Allium porrum* L.
9. *Allium schoenoprasum* L.

Apiaceae

10. *Angelica archangelica* L.
W: POL: Wrocław, meadow near the Odra river; coll. 1997 by BGMP¹
11. *Angelica cincta* H. Boissieu
12. *Carum carvi* L.
13. *Coriandrum sativum* L.
14. *Foeniculum vulgare* Mill.
15. *Foeniculum vulgare* Mill. var. *dulce* (Mill.) Batt. et Trab.
16. *Foeniculum vulgare* Mill. 'Purpureum'
17. *Heracleum sphondylium* L.
W: FRA: Dép. du Calvados: Site Urbain "préservé" de la Ville de Caen;
coll. 2018; ex BG Caen
18. *Levisticum officinale* W.D.J. Koch
19. *Pastinaca sativa* L.
20. *Peucedanum officinale* L.

Apocynaceae

21. *Amsonia tabernaemontana* Walter
22. *Asclepias tuberosa* L.

¹ BGMP – Botanical Garden of Medicinal Plants

Asphodelaceae

23. *Asphodeline lutea* (L.) Rchb.
24. *Hemerocallis middendorffii* var. *esculenta* (Koidz.) Ohwi
Z: Japan; ex BG Regensburg

Asteraceae

25. *Achillea millefolium* L.
26. *Achillea ptarmica* L.; XX-0-LZ-M-26-1995
27. *Artemisia absinthium* L.
28. *Artemisia annua* L.
29. *Artemisia campestris* L.
W: AUT: Burgenland, Illmitz; trockene Wiese; 118 m a.s.l.; coll. 2022;
ex BG Wien Univ. AT-0-WU-0033637
30. *Calendula officinalis* L.
31. *Carthamus tinctorius* L.
32. *Centaurea benedicta* (L.) L.
33. *Centaurea cyanus* L.
34. *Cichorium intybus* L.
35. *Coreopsis grandiflora* Hogg ex Sweet 'Nana'
36. *Cota tinctoria* (L.) J. Gay
37. *Cynara cardunculus* L. subsp. *scolymus* (L.) Hegi;
XX-0-LZ-APO-171-2010
38. *Echinacea purpurea* (L.) Moench
39. *Echinacea tennesseensis* (Beadle) Small
40. *Echinops ritro* L.
41. *Eupatorium cannabinum* L.
42. *Gaillardia* Foug. 'Burgunder'
43. *Inula helenium* L.
44. *Inula royleana* DC.
45. *Matricaria chamomilla* L.
46. *Pulicaria dysenterica* (L.) Bernh.
47. *Silybum marianum* (L.) Gaertn.
48. *Tagetes lucida* Cav.
49. *Tanacetum cinerariifolium* (Trevir.) Sch. Bip.
50. *Tanacetum parthenium* (L.) Sch. Bip.
51. *Tanacetum vulgare* L.
52. *Taraxacum* sect. *Taraxacum* F.H.Wigg.

Bignoniaceae

53. *Catalpa ovata* G. Don
W: CHN: Prov. Hunan, Mt. Heng, 1000 m a.s.l., 27°15'N 112°41'E; coll. 2004;
ex BG Shanghai.

Boraginaceae

54. *Borago officinalis* L.

Brassicaceae

55. *Brassica nigra* W.D.J.Koch
56. *Brassica oleracea* L. var. *sabellica* L.
57. *Capsella bursa-pastoris* (L.) Medik.
58. *Eruca sativa* Mill.
59. *Fibigia clypeata* (L.) Medik.
60. *Sinapis alba* L.

Calycanthaceae

61. *Calycanthus chinensis* (W.C. Cheng et S.Y. Chang) W.C. Cheng et S.Y. Chang
ex P.T. Li; XX-0-MJG-199209100

Campanulaceae

62. *Codonopsis lanceolata* (Siebold et Zucc.) Benth. et Hook.f. ex Trautv.
63. *Platycodon grandiflorus* (Jacq.) A. DC.

Cannabaceae

64. *Humulus lupulus* L.

Caprifoliaceae

65. *Knautia arvensis* (L.) Coult.
66. *Scabiosa lucida* Vill.
67. *Succisa pratensis* Moench
68. *Valeriana officinalis* L.

Caryophyllaceae

69. *Agrostemma githago* L.

Cistaceae

70. *Cistus albidus* L.; XX-0-HOH-SYS-K-2107
71. *Cistus salviifolius* L.
W: FRA: Massif de l'Esterel, coll. 2020; ex BG Antibes (Villa Thuret),
FR-0-VTA-2020.102

Cucurbitaceae

72. *Cyclanthera pedata* (L.) Schrad.; XX-0-BONN-19153

Euphorbiaceae

73. *Ricinus communis* L.

Fabaceae

74. *Abrus precatorius* L.
75. *Cladrastis kentukea* (Dum. Cours.) Rudd.
76. *Desmodium canadense* (L.) DC.; XX-0-LJU-G-555-271
77. *Galega officinalis* L.
78. *Genista tinctoria* L.; XX-0-LZ-H-7-1997
79. *Glycyrrhiza glabra* L.
80. *Laburnum alpinum* (Mill.) Bercht. et J. Presl
W: FRA: Dép. Lozère: Najaret; coll.: 2002; ex BG Paris
81. *Lupinus polyphyllus* Lindl.
82. *Lupinus polyphyllus* Lindl. – white flower form
83. *Melilotus albus* Medik.
84. *Melilotus officinalis* (L.) Lam.
85. *Ononis spinosa* L.
86. *Petteria ramentacea* (Sieber) C. Presl
87. *Thermopsis chinensis* Benth. ex S. Moore
88. *Thermopsis lanceolata* R. Br.
89. *Trigonella foenum-graecum* L.

Gentianaceae

90. *Centaurium erythraea* Rafn

Hypericaceae

91. *Hypericum androsaemum* L.
92. *Hypericum perforatum* L.

Lamiaceae

93. *Betonica officinalis* L.
94. *Clinopodium nepeta* (L.) Kuntze s.l.
W: ITA: Prov. L'Aquila: Sulmona, Il Vellaneto, 750 m a.s.l.; coll.: 2020;
ex BG S. Eufemia a Maiella
95. *Clinopodium vulgare* L.
W: AUT: Niederösterreich; Garmanns; ruderalisiertes Grünland; 260 m a.s.l.;
coll.: 30.09.2021; ex BG Wien Univ.; AT-0-WU-0032583
96. *Hyssopus officinalis* L.
97. *Lavandula angustifolia* Mill.
98. *Lavandula angustifolia* Mill. 'Hitcote Blue'
99. *Leonurus cardiaca* L.
100. *Marrubium vulgare* L.; XX-0-OBRHZ-0240
101. *Melissa officinalis* L.
102. *Nepeta cataria* L.
103. *Nepeta* × *faassenii* Bergmans ex Stearn 'Six Hills Giant'
104. *Nepeta nuda* L. subsp. *nuda*

-
105. *Nepeta racemosa* Lam.
106. *Ocimum americanum* L.
107. *Ocimum basilicum* L.
108. *Ocimum basilicum* L. 'Citriodorum'
109. *Ocimum tenuiflorum* L.
110. *Origanum vulgare* L.
111. *Origanum vulgare* L. 'Compactum'
112. *Prunella vulgaris* L.
113. *Salvia glutinosa* L.
114. *Salvia nemorosa* L.
115. *Salvia officinalis* L.
116. *Salvia przewalskii* Maxim.
117. *Salvia sclarea* L.; XX-O-BGAT-0015129
118. *Salvia tomentosa* Mill.
W: UKR: Crimea, near Yalta; coll.: 2009 by BGMP
119. *Satureja hortensis* L.
120. *Satureja montana* L.
121. *Scutellaria baicalensis* Georgi
122. *Scutellaria barbata* D. Don
123. *Sideritis hyssopifolia* L.; XX-O-UDE-15-27-8-0
124. *Sideritis syriaca* L.; XX-O-LZ-ZF-633-1995
125. *Stachys germanica* L.
W: POL: Guzówka-Kolonia; coll: 2008 by BGMP
126. *Teucrium hircanicum* L.
127. *Teucrium scorodonia* L. 'Crispum'
128. *Thymus vulgaris* L.

Liliaceae

129. *Lilium regale* E.H. Wilson; XX-0-KL-2011/291

Linaceae

130. *Linum usitatissimum* L.

Malvaceae

131. *Abutilon theophrasti* Medik.
132. *Alcea rosea* L. 'Nigra'
133. *Althaea officinalis* L.
134. *Malva sylvestris* L.

Onagraceae

135. *Oenothera paradoxa* Hudziok

Papaveraceae

- 136. *Glaucium flavum* Crantz
- 137. *Papaver rhoeas* L.
- 138. *Papaver somniferum* L.

Phytolaccaceae

- 139. *Phytolacca acinosa* Roxb.; XX-0-ROST-2003-F-3151

Plantaginaceae

- 140. *Chelone glabra* L.
- 141. *Digitalis grandiflora* Mill.
- 142. *Digitalis lanata* Ehrh.; XX-O-DATH-4856
- 143. *Digitalis lutea* L.
- 144. *Digitalis purpurea* L.; DE-0-WU-0014232
- 145. *Digitalis purpurea* L. 'Alba'
- 146. *Plantago lanceolata* L.

Polygonaceae

- 147. *Bistorta officinalis* Delarbre
- 148. *Rheum officinale* Baill.
- 149. *Rheum rhabarbarum* L.; XX-O-HOH-SYS-13632

Primulaceae

- 150. *Primula veris* L.
W: POL: Skowronno; coll. 2001 by BGMP

Ranunculaceae

- 151. *Aquilegia vulgaris* L.
- 152. *Aquilegia vulgaris* L. 'Green Apples'
- 153. *Clematis integrifolia* L.
- 154. *Consolida regalis* Gray

Rhamnaceae

- 155. *Paliurus spina-christi* Mill.
W: SVN: Dragonja; coll.: 2002; ex BG Ljubljana

Rosaceae

- 156. *Agrimonia eupatoria* L.
- 157. *Alchemilla xanthochlora* Rothm.
- 158. *Cotoneaster gamblei* G. Klotz
Z: Nepal, coll.1993; ex BG Strasbourg; NP-0-STR-1993044
- 159. *Crataegus turkestanica* Pojark.
- 160. *Filipendula ulmaria* (L.) Maxim.

-
161. *Fragaria vesca* L.
162. *Geum urbanum* L.
163. *Potentilla alba* L.
164. *Prinsepia uniflora* Batalin
165. *Prunus tenella* Batsch
166. *Rosa gallica* L.
W: POL: Wrocław; coll.: 2007 by BGMP
167. *Sanguisorba minor* Scop.
168. *Sanguisorba officinalis* L.

Rutaceae

169. *Citrus trifoliata* L.
170. *Dictamnus albus* L.
171. *Ruta graveolens* L.

Sapindaceae

172. *Acer macrophyllum* Pursh; XX-0-ULM-1994-F-212

Scrophulariaceae

173. *Verbascum thapsus* L.

Solanaceae

174. *Datura innoxia* Mill.
175. *Datura stramonium* L.
176. *Hyoscyamus niger* L.
177. *Nicotiana rustica* L.
178. *Nicotiana tabacum* L.
179. *Solanum dulcamara* L.

Staphyleaceae

180. *Staphylea pinnata* L.
W: AUT: Wien: Leopoldsberg; coll.: 2006; ex. BG Klagenfurt;
AT-0-KL-2007/152

Tropaeolaceae

181. *Tropaeolum majus* L.

Verbenaceae

182. *Verbena bonariensis* L.

Violaceae

183. *Viola tricolor* L.

**SEMINA PLANTARUM
EX LOCIS NATURALIBUS COLLECTA**

Omnia semina in anno 2025 collecta.

Fabaceae

184. *Astragalus cicer* L.
POL: Wrocław, anthropogenic community, Coll.: 3 Sep. 2025; GW

Pinaceae

185. *Abies alba* Mill.
POL, mixed forest, Sudetes Mts, Złote Mts. Coll.: 18 Oct. 2025,
50°21'38,46"N 16°52'2,02"E, 567 m a.s.l.; GW
186. *Abies alba* Mill.
POL, mixed forest, Sudetes Mts, Stołowe Mts. Coll.: 25 Oct. 2025,
50°28'4,50"N 16°20'52,86"E, 767 m a.s.l.; GW

Plantaginaceae

187. *Digitalis purpurea* L.
POL, Forest clearing to the S from Przesieka village, mixed forest,
Sudetes Mts, Giant Mountains (Karkonosze). Coll.: 8 Sep. 2025,
50°47'2,11"N 15°39'30,50"E, 853 m a.s.l.; GW

Polygonaceae

188. *Bistorta officinalis* Delarbre
POL: grass community, Sudetes Mts, Giant Mountains (Karkonosze).
Coll.: 18 Aug. 2025, 50°46'51,56"N 15°33'48,11"E, 1246 m a.s.l.; GW

COLLECTOR

GW Grzegorz Wójcik MSc

BIBLIOGRAPHY

- Catalogue of Life: www.catalogueoflife.org. Accessed February 4, 2026.
- Euro+Med PlantBase: www.europusmed.org. Accessed February 4, 2026.
- Huxley A., 1999. The New Royal Horticultural Society Dictionary of Gardening. London: Macmillan Reference.
- International Plant Names Index. www.ipni.org. Accessed February 4, 2026.
- Royal Botanical Gardens Kew. Plants of the World Online. powo.science.kew.org. Accessed February 4, 2026.
- Stevens, P.F. 2022 onwards. Angiosperm Phylogeny Website. Version 14, July 2017 [and more or less continuously updated since].
www.mobot.org/MOBOT/research/APweb/. Accessed February 4, 2026.
- WFO. World Flora Online. www.worldfloraonline.org. Accessed February 4, 2026.

Attention!

Since the endorsement of the Convention on Biological Diversity (Rio de Janeiro 1992), Article 15 has been of special interest to the botanical gardens, particularly regarding the annual seed-exchange. The Botanical Garden of Medicinal Plants (BGMP) assumes that all recipients of seeds or any parts of plants for propagation offered in our *Index Seminum* as well as generally from the plant collections of the BGMP use them in a manner that does not violate the Convention.

The BGMP do supplies plant material exclusively under the following conditions:

1. The material, without any exception, is used for scientific research, species conservations, education and public relations, with no commercial intent. The recipient is obliged to document and preserve information relating to the material appropriately.
2. In the case where the material obtained from the BGMP is intended for commercial use, written permission must be obtained from the BGMP. The recipient commits him/herself to appropriately sharing any benefits arising from this use with the countries of origin.
3. It is not allowed to pass the material on to a third party without written permission from the BGMP. The BGMP do requests a citation of the material's origin in any publication resulting from the material provided by the BGMP, as well as automatically providing a copy of the publication to the BGMP.

By ordering seeds from the BGMP, the recipient accepts and pledges to respect the above conditions.

DESIDERATA 2025/2026

Please order no more than 25 species.

We do not provide a phytosanitary certificate.

Deadline for orders: 31st March 2026.

Desiderata should be sent to our address (preferred e-mail):

BOTANICAL GARDEN OF MEDICINAL PLANTS

WROCLAW MEDICAL UNIVERSITY

Kochanowskiego 10-14

51-601 WROCLAW

POLAND

or by e-mail: malgorzata.stachura@umw.edu.pl

Your address:

--