



WROCLAW
MEDICAL UNIVERSITY

HORTUS BOTANICUS PLANTARUM MEDICINARUM
UNIVERSITATIS MEDICAE WRATISLAVIENSIS

ISSN 1733-9006

INDEX SEMINUM 2024

qui ex Horto Botanico nostro Plantarum Medicinarum
pro mutua commutatione offert anno 2024



WROCLAW 2024

**BOTANICAL GARDEN OF MEDICINAL PLANTS
DEPARTMENT OF PHARMACEUTICAL BIOLOGY AND BIOTECHNOLOGY
WROCLAW MEDICAL UNIVERSITY**

51-601 Wrocław, Al. J. Kochanowskiego 10–14
tel. (+48 71) 348-28-29; (+48 71) 348 29 42
e-mail: ogrod@umw.edu.pl

HEAD: PROF. ADAM MATKOWSKI

Year of establishment:	1946	
Geographical position:	latitude	51°07'03"N
	longitude	17°04'27"E
	altitude	117 m a.s.l.
Area of the garden:	3,07 ha	
Area of the glasshouses:	350 m²	

Seed collectors & co-authors

Katarzyna Hage, Klemens Jakubowski, Anna Kałuża,
Małgorzata Stachura, Marek Surma, Grzegorz Wójcik

Text editors

(including meteorological data processing and compilation)
Klemens Jakubowski, Grzegorz Wójcik

METEOROLOGICAL DATA FOR WROCLAW

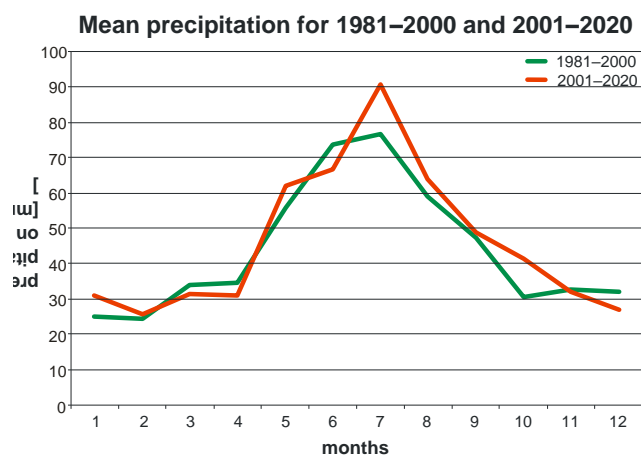
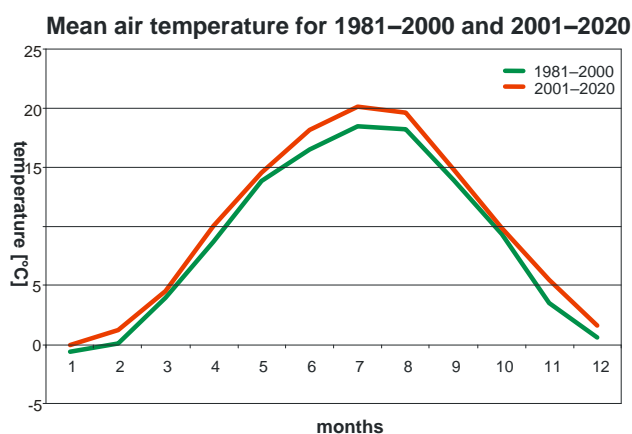
Weather station: Wrocław-Strachowice (IMGW-PIB)

Mean air temperature [°C] for the periods 1981–2000 (A) and 2001–2020 (B)

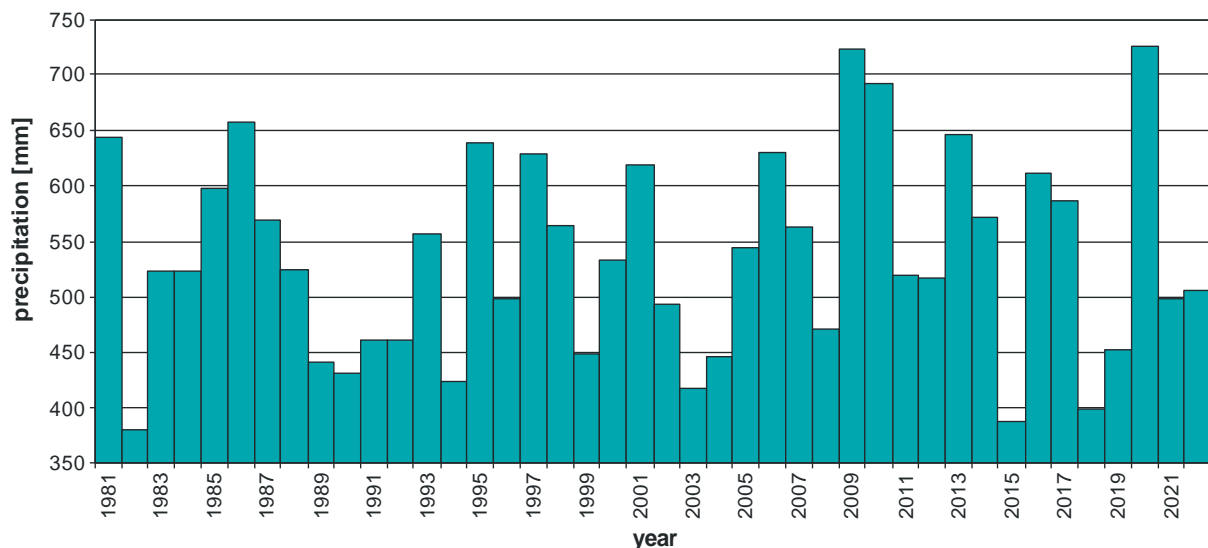
	Months												Year
	I	II	III	IV	V	VI	VII	VIII	IX	X	XI	XII	Σ
A	-0,6	0,1	4,0	8,7	13,9	16,5	18,5	18,2	13,9	9,3	3,5	0,5	8,87
B	0,0	1,2	4,5	10,0	14,5	18,1	20,1	19,6	14,8	9,8	5,5	1,6	9,98

Mean precipitation [mm] for the periods 1981–2000 (A) and 2001–2020 (B)

	Months												Year
	I	II	III	IV	V	VI	VII	VIII	IX	X	XI	XII	Σ
A	25	24	33	34	56	74	77	59	47	30	33	32	524
B	31	26	31	31	62	67	91	64	49	41	32	27	552



Annual sum of precipitation 1981-2022



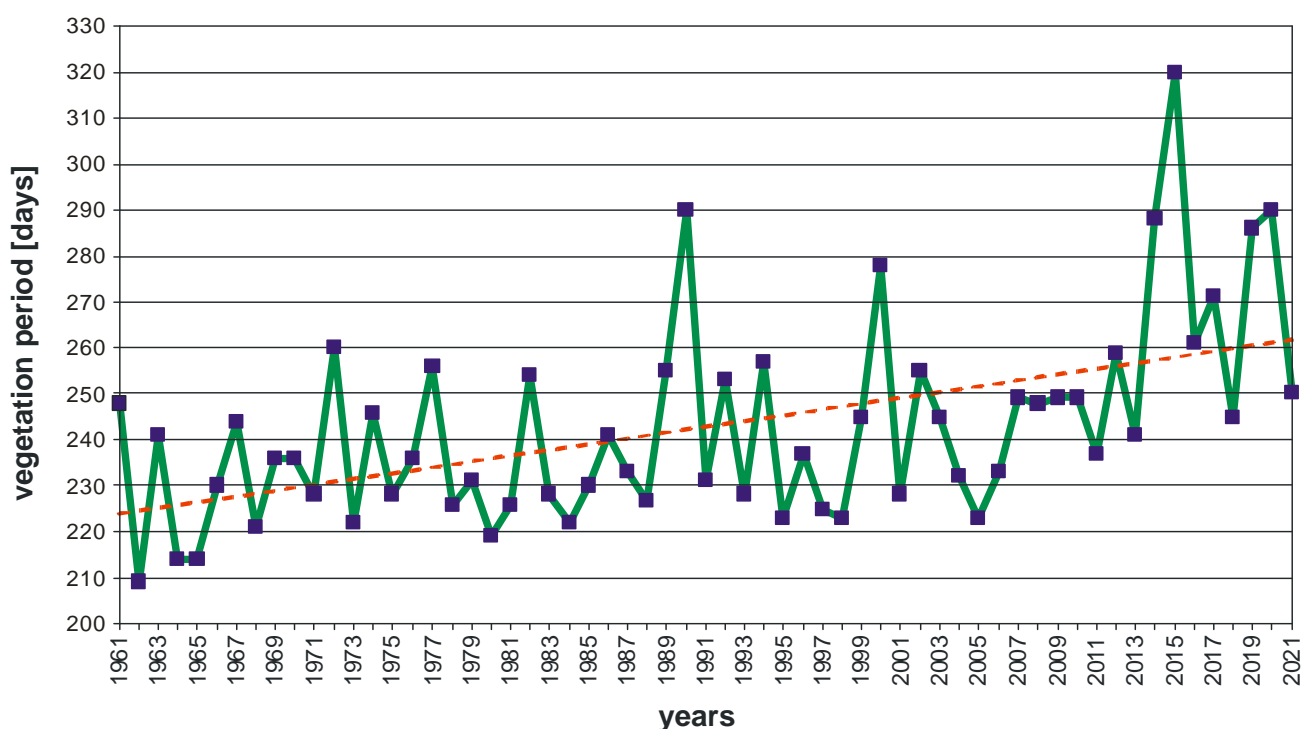
Extremes of air temperature from 1951 to 2022

absolute maximum **37,9°C** (08 Aug 2015)
 absolute minimum **-32,0°C** (11 Feb 1956)

Selected climatic features for the periods 1981–2000 and 2001–2020

	1981–2000	2001–2020
Mean annual air temperature [°C]	8,87	9,98
Mean air temperature – January [°C]	-0,6	0,0
Mean air temperature – July [°C]	18,5	20,1
Absolute maximum air temperature [°C]	37,4	37,9
Absolute minimum air temperature [°C]	-29,5	-22,5
Annual sum of precipitation [mm]	524	552
Mean annual vegetation period [days]	240	255

Annual vegetation period 1961-2021



Notes:

Vegetation period as defined according to the number of days with continued average daily air temperature of $\geq 5,0^{\circ}\text{C}$ (heights 2 m above the ground).

Data source: IMGW-PIB (<http://www.imgw.pl>, access: 08.12.2023)

SEMINA PLANTARUM IN HORTO CULTARUM

Omnia semina in anno 2024 collecta.

Semina proveniunt pollinationem apertam. Hybridarum excludi non potest.

W – plants introduced from wild.

Amaranthaceae

1. *Amaranthus caudatus* L.
2. *Amaranthus cruentus* L. ‘Golden Giant’
3. *Amaranthus cruentus* L. ‘Hot Biscuits’
4. *Amaranthus tricolor* L. ‘Elephant Head’

Amaryllidaceae

5. *Allium ascalonicum* L.
6. *Allium fistulosum* L.
7. *Allium obliquum* L.
8. *Allium porrum* L.
9. *Allium schoenoprasum* L.
10. *Allium scorodoprasum* L.; bulbils
11. *Allium tuberosum* Rottler ex Spreng.

Apiaceae

12. *Ammi majus* L.
13. *Angelica archangelica* L.
W: PL, Wrocław, meadow near the Odra river; coll. 1997
14. *Angelica cincta* H. Boissieu
15. *Coriandrum sativum* L.
16. *Foeniculum vulgare* Mill.
17. *Foeniculum vulgare* Mill. var. *dulce* (Mill.) Batt. et Trab.
18. *Foeniculum vulgare* Mill. ‘Purpureum’
19. *Heracleum sphondylium* L.
W: FR, Département du Calvados: Site Urbain “préservé” de la Ville de Caen;
coll. 2018; ex BG Caen
20. *Levisticum officinale* W.D.J. Koch
21. *Pastinaca sativa* L.

Apocynaceae

22. *Amsonia tabernaemontana* Walter
23. *Asclepias tuberosa* L.

Asparagaceae

24. *Anemarrhena asphodeloides* Bunge
25. *Hosta ventricosa* Stearn

Asteraceae

26. *Achillea millefolium* L.
27. *Achillea ptarmica* L.
XX-0-LZ-M-26-1995
28. *Artemisia absinthium* L.
29. *Artemisia annua* L.
30. *Artemisia campestris* L.
W: AT: Burgenland, Illmitz; trockene Wiese; 118 m a.s.l.; coll. 2022;
ex BG Wien Univ. AT-0-WU-0033637
31. *Calendula officinalis* L.
32. *Carthamus tinctorius* L.
33. *Centaurea benedicta* (L.) L.
34. *Centaurea cyanus* L.
35. *Cichorium intybus* L.
36. *Coreopsis grandiflora* Hogg ex Sweet 'Nana'
37. *Cota tinctoria* (L.) J. Gay
38. *Cynara cardunculus* L. subsp. *scolymus* (L.) Hegi
XX-0-LZ-APO-171-2010
39. *Echinacea purpurea* (L.) Moench
40. *Echinacea tenesseensis* (Beadle) Small
41. *Echinops ritro* L.
42. *Gaillardia* Foug. 'Burgunder'
43. *Inula helenium* L.
44. *Matricaria chamomilla* L.
45. *Pulicaria dysenterica* (L.) Bernh.
46. *Silybum marianum* (L.) Gaertn.
47. *Tanacetum cinerariifolium* (Trevir.) Sch.Bip.
48. *Tanacetum macrophyllum* (Waldst. & Kit.) Sch.Bip.
49. *Tanacetum parthenium* (L.) Sch.Bip.
50. *Tanacetum vulgare* L.
51. *Taraxacum* sect. *Taraxacum* F.H.Wigg.
52. *Tithonia rotundifolia* (Mill.) S.F.Blake

Boraginaceae

53. *Borago officinalis* L.

Brassicaceae

54. *Brassica nigra* W.D.J.Koch
55. *Capsella bursa-pastoris* (L.) Medik.
56. *Fibigia clypeata* (L.) Medik.
57. *Sinapis alba* L.

Calycanthaceae

58. *Calycanthus chinensis* (W.C.Cheng et S.Y.Chang) W.C.Cheng et S.Y.Chang
ex P.T.Li
XX-0-MJG-199209100

Campanulaceae

59. *Codonopsis lanceolata* (Siebold et Zucc.) Benth. et Hook.f. ex Trautv.
60. *Platycodon grandiflorus* (Jacq.) A.DC.

Cannabaceae

61. *Humulus lupulus* L.

Caprifoliaceae

62. *Knautia arvensis* (L.) Coult.
63. *Scabiosa lucida* Vill.
64. *Valeriana officinalis* L.

Caryophyllaceae

65. *Agrostemma githago* L.
66. *Dianthus henteri* Heuff. ex Griseb. & Schenk
RO-0-CLA-3040

Cucurbitaceae

67. *Cyclanthera pedata* (L.) Schrad.
XX-0-BONN-19153

Euphorbiaceae

68. *Ricinus communis* L.

Fabaceae

69. *Astragalus propinquus* Schischkin
70. *Galega officinalis* L.
71. *Genista tinctoria* L.
XX-0-LZ-H-7-1997
72. *Glycyrrhiza glabra* L.
73. *Lupinus polyphyllus* Lindl.
74. *Ononis spinosa* L.
75. *Trigonella foenum-graecum* L.

Hypericaceae

76. *Hypericum androsaemum* L.
77. *Hypericum perforatum* L.

Lamiaceae

78. *Betonica officinalis* L.
79. *Hyssopus officinalis* L.

80. *Lavandula angustifolia* Mill.
81. *Lavandula angustifolia* Mill. 'Hidcote Blue'
82. *Leonurus cardiaca* L.
83. *Marrubium vulgare* L.
XX-0-OBRHZ-0240
84. *Melissa officinalis* L.
85. *Nepeta cataria* L.
86. *Nepeta* × *faassenii* Bergmans ex Stearn 'Six Hills Giant'
87. *Nepeta nuda* L. subsp. *nuda*
88. *Nepeta racemosa* Lam.
89. *Ocimum americanum* L.
90. *Ocimum basilicum* L.
91. *Ocimum basilicum* L. 'Citriodorum'
92. *Ocimum tenuiflorum* L.
93. *Origanum vulgare* L.
94. *Origanum vulgare* L. 'Aureum'
95. *Origanum vulgare* L. 'Compactum'
96. *Prunella vulgaris* L.
97. *Salvia glutinosa* L.
98. *Salvia nemorosa* L.
99. *Salvia nemorosa* L. 'Blaukönigin'
100. *Salvia officinalis* L.
101. *Salvia sclarea* L.
XX-0-BGAT-0015129
102. *Satureja hortensis* L.
103. *Satureja montana* L.
104. *Sideritis hyssopifolia* L.
XX-0-UDE-15-27-8-0
105. *Sideritis syriaca* L.
XX-0-LZ-ZF-633-1995
106. *Teucrium hircanicum* L.
107. *Teucrium scorodonia* L. 'Crispum'

Liliaceae

108. *Tulipa sylvestris* L.
109. *Tulipa urumiensis* Stapf

Linaceae

110. *Linum usitatissimum* L.

Malvaceae

111. *Alcea rosea* L. 'Nigra'
112. *Althaea officinalis* L.
113. *Malva sylvestris* L.

Onagraceae

114. *Oenothera paradoxa* Hudziok

Papaveraceae

115. *Glaucium flavum* Crantz
116. *Papaver rhoeas* L.
117. *Papaver somniferum* L.

Plantaginaceae

118. *Digitalis lanata* Ehrh.
XX-0-DATH-4856
119. *Digitalis lutea* L.
120. *Digitalis purpurea* L.
DE-0-WU-0014232
121. *Digitalis purpurea* L. 'Alba'
122. *Penstemon digitalis* Nutt. ex Sims
123. *Plantago lanceolata* L.

Polygonaceae

124. *Bistorta officinalis* Delarbre
125. *Rheum officinale* Baill.
126. *Rheum rhabarbarum* L.
XX-0-HOH-SYS-13632

Ranunculaceae

127. *Aquilegia vulgaris* L.
128. *Aquilegia vulgaris* L. 'Green Apples'
129. *Clematis integrifolia* L.
130. *Delphinium consolida* L.
131. *Trollius europaeus* L.

Rhamnaceae

132. *Paliurus spina-christi* Mill.
W: SI: Dragonja ; coll. 2002; ex. BG Ljubljana

Rosaceae

133. *Agrimonia eupatoria* L.
134. *Alchemilla xanthochlora* Rothm.
135. *Cotoneaster gamblei* G.Klotz
NP-0-STR-1993044
136. *Cotoneaster wardii* W.W.Sm.
XX-0-STR-1993043
137. *Crataegus crus-galli* L.
138. *Crataegus turkestanica* Pojark.
139. *Filipendula ulmaria* (L.) Maxim.

- 140. *Fragaria vesca* L.
- 141. *Geum urbanum* L.
- 142. *Potentilla alba* L.
- 143. *Prinsepia uniflora* Batalin
- 144. *Rosa glauca* Pourr.
- 145. *Rosa rugosa* Thunb.
W: JP: Hokkaido, pref. Koshimizu-machi; coll. 2004; ex Tokyo MMPG
- 146. *Sanguisorba minor* Scop.
- 147. *Sanguisorba officinalis* L.

Rutaceae

- 148. *Citrus trifoliata* L.
- 149. *Ruta graveolens* L.

Solanaceae

- 150. *Alkekengi officinarum* Moench
- 151. *Atropa bella-donna* L.
- 152. *Datura innoxia* Mill.
- 153. *Datura stramonium* L.
- 154. *Solanum dulcamara* L.

Tropaeolaceae

- 155. *Tropaeolum majus* L.

Verbenaceae

- 156. *Verbena bonariensis* L.

Violaceae

- 157. *Viola tricolor* L.

Xanthorrhoeaceae

- 158. *Asphodeline lutea* (L.) Rchb.
- 159. *Hemerocallis esculenta* Koidz.

SEMINA PLANTARUM EX LOCIS NATURALIBUS COLLECTA

Omnia semina in anno 2024 collecta.

Adoxaceae

160. *Viburnum opulus* L.
PL, field thickets to the W of the village of Człuchy,
Smółdzino Commune, Słupsk County, Pomeranian Voivodeship
54°39'58,88"N 017°11'28,33"E, 3 m a.s.l.; KH

Alismataceae

161. *Alisma plantago-aquatica* L.
PL, Wrocław, meadow community near the Odra–Widawa canal,
near the Strachociński bridge
51°06'47,75"N 017°08'01,38"E, 117 m a.s.l.; AK

Amaryllidaceae

162. *Allium oleraceum* L.; bulbils
PL, Wrocław, meadow in the inter-embankment area, Odra flood channel,
near the Bartoszowicki Bridge,
51°06'13,39"N 017°07'25,24"E, 117 m a.s.l.; AK

Apiaceae

163. *Angelica sylvestris* L.
PL, nearby forest road to the S of the village of Przesieka, mixed forest with
a predominance of spruce, Giant Mountains (Karkonosze), Sudetes;
coll. 29 Aug. 2024,
50°47'26,48"N 015°39'51,49"E, 730 m a.s.l.; GW
164. *Daucus carota* L.
PL, Wrocław, meadow in the inter-embankment area, Odra–Widawa canal,
51°06'52,68"N 017°08'00,35"E, 117 m a.s.l.; AK
165. *Heracleum sphondylium* L.
PL, Wrocław, meadow community on the inter-embankment area,
left bank of the Odra flood channel, to the E of the Jagiellońskie bridges,
51°07'40,96"N 017°04'49,90"E, 116 m a.s.l.; AK
166. *Pastinaca sativa* L.
PL, Wrocław, Swojczyce, meadow community,
51°07'02,18"N 017°07'53,19"E, 118 m a.s.l.; AK

Asparagaceae

167. *Asparagus officinalis* L.
PL, Wrocław, meadow community on the embankment area,
right bank of the Odra flood channel, to the E of the Jagiellońskie bridges,
51°07'40,98"N 017°04'57,09"E, 119 m a.s.l.; AK

168. *Muscari comosum* (L.) Mill.
PL, Wrocław, meadow in the inter-embankment area, Odra flood channel,
51°06'22,18"N 017°07'14,24"E, 117 m a.s.l.; AK

Asteraceae

169. *Achillea millefolium* L.
PL, dirt road border near the village of Świdnik, Kaczawskie Mts, Sudetes;
coll. 1 Sep 2024,
50°53'31,40"N 015°59'35,37"E, 465 m a.s.l.; KJ
170. *Centaurea jacea* L.
PL, Wrocław, meadow community on the embankment area,
left bank of the Widawa river,
51°08'12,74"N 017°06'13,28"E, 118 m a.s.l.; AK
171. *Centaurea stoebe* L.
PL, Wrocław, meadow community on the embankment
near the Odra–Widawa canal,
51°06'45,99"N 017°07'58,25"E, 119 m a.s.l.; AK
172. *Cichorium intybus* L.
PL, Wrocław, meadow community on the embankment area
near the Odra–Widawa canal, near the Strachociński bridge,
51°06'50,82"N 017°07'57,08"E, 119 m a.s.l.; AK
173. *Cirsium oleraceum* (L.) Scop.
PL, along the road near the forest, Ołowiane Mts (part of Kaczawskie Mts),
Sudetes; coll. 1 Sep 2024,
50°53'33,55"N 015°59'24,66"E, 508 m a.s.l.; KJ
174. *Eupatorium cannabinum* L.
DE, Sachsen-Anhalt, Möhlauer See, lake shore; coll. 9 Aug. 2024,
51°44'24,00"N 012°21'23,70"E, 95 m a.s.l.; KJ
175. *Petasites albus* (L.) Gaertn.
PL, deciduous forest near Mielnicka Pass, Krowiarki Hills, Śnieżnik Massif,
Sudetes; coll. 28 Apr 2024,
50°21'00,63"N 016°40'02,22"E, 430 m a.s.l.; GW
176. *Prenanthes purpurea* L.
PL, forest clearing, NE of Borowice village, mixed forest with a predominance
of Norway spruce, Giant Mountains (Karkonosze), Sudetes;
coll. 31 Aug 2024,
50°47'49,96"N 015°41'11,89"E, 618 m a.s.l.; GW
177. *Senecio ovatus* Willd.
PL, nearby forest road, to the NE of the village Borowice, mixed forest with
a predominance of spruce, Giant Mountains (Karkonosze), Sudetes;
coll. 31 Aug 2024,
50°48'00,25"N 015°40'55,42"E, 592 m a.s.l.; GW

-
178. *Senecio ovatus* Willd.
PL, edge of the forest, Lower Silesia, Sudetes, Ołowiane Mts (part of Kaczawskie Mts);
coll. 1 Sep 2024,
50°54'00,75"N 015°55'49,57"E, 595 m a.s.l.; KJ
179. *Senecio sylvaticus* L.
PL, forest road to the NE of the village of Borowice, mixed forest with a predominance of spruce, Giant Mountains (Karkonosze), Sudetes;
coll. 31 Aug 2024,
50°47'50,47"N 015°41'11,46"E, 620 m a.s.l.; GW
180. *Solidago virgaurea* L.
PL, field thickets near Człuchy village, to the NE of the village, Smołdzino Commune, Słupsk County, Pomeranian Voivodeship,
54°40'10,72"N 017°12'17,88"E, 4 m a.s.l.; KH
181. *Tragopogon pratensis* L.
PL, Wrocław, meadow community on the embankment area, left bank of the Widawa river,
51°08'17,15"N 017°06'02,48"E, 117 m a.s.l.; AK
182. *Tussilago farfara* L.
PL, Wrocław, meadow community on the embankment area along the Widawa river,
51°07'36,54"N 017°07'45,44"E, 118 m a.s.l.; AK

Boraginaceae

183. *Anchusa officinalis* L.
PL, Wrocław, meadow community on the embankment near the Odra–Widawa canal,
51°06'40,01"N 017°07'59,27"E, 119 m a.s.l.; AK
184. *Echium vulgare* L.
PL, Wrocław, meadow community on the inter-embankment area, right bank of Odra flood channel, to the E of the Jagiellońskie bridges,
51°07'40,11"N 017°04'51,38"E, 115 m a.s.l.; AK
185. *Symphytum officinale* L.
PL, Wrocław, meadow community on the inter-embankment area, left bank of the Widawa river,
51°08'30,34"N 017°05'54,23"E, 116 m a.s.l.; AK

Brassicaceae

186. *Berteroa incana* (L.) DC.
PL, Wrocław, meadow community on the embankment area, left bank of the Widawa river,
51°08'12,74"N 017°06'13,28"E, 118 m a.s.l.; AK

Campanulaceae

187. *Campanula sibirica* L.
PL, Wrocław, meadow community on the inter-embankment area near the Odra–Widawa canal, near the Strachociński bridge, 51°06'49,37"N 017°07'58,55"E, 117 m a.s.l.; AK

Cannabaceae

188. *Humulus lupulus* L.
PL, Wrocław, bushes near the old bunker, 51°06'55,01"N 017°07'56,23"E, 118 m a.s.l.; AK

Caprifoliaceae

189. *Dipsacus fullonum* L.
PL, Wrocław, meadow community on the inter-embankment area, right bank of the Widawa river, 51°07'08,53"N 017°08'02,65"E, 117 m a.s.l.; AK
190. *Knautia arvensis* (L.) Coult.
PL, Wrocław, meadow community on the embankment near the Odra–Widawa canal, 51°06'33,90"N 017°08'00,99"E, 119 m a.s.l.; AK

Caryophyllaceae

191. *Dianthus deltoides* L.
PL, Wrocław, meadow communities on the embankment along the Odra–Widawa canal, 51°06'49,33"N 017°07'57,29"E, 119 m a.s.l.; AK
192. *Saponaria officinalis* L.
PL, Wrocław, meadow in the inter-embankment area, Odra flood channel, to the NW of the Bolesław Chrobry bridges, 51°06'52,22"N 017°06'24,97"E, 116 m a.s.l.; AK
193. *Silene vulgaris* (Moench) Garcke
PL, Wrocław, meadow in the inter-embankment area, Odra flood channel, near the Bartoszowicki bridge, 51°06'16,44"N 017°07'23,28"E, 117 m a.s.l.; AK

Celastraceae

194. *Euonymus europaeus* L.
PL, thickets by the Widawa river, left bank, Wisznia Mała Commune, Trzebnica County, Lower Silesian Voivodeship, 51°11'17,93"N 017°00'51,41"E, 113 m a.s.l.; GW
195. *Euonymus europaeus* L.
PL, field thickets, to the NE of the village of Człuchy, Smółdzino Commune, Słupsk County, Pomeranian Voivodeship, 54°40'11,87"N 017°12'18,64"E, 4 m a.s.l.; KH

Fabaceae

196. *Astragalus cicer* L.
PL, Wrocław, Swojczyce, meadow community at the former landfill site,
51°07'35,23"N 017°07'45,83"E, 120 m a.s.l.; AK
197. *Astragalus glycyphyllos* L.
PL, Wrocław, meadow community on the inter-embankment area,
Widawa river,
51°07'40,43"N 017°07'44,00"E, 117 m a.s.l.; AK
198. *Galega officinalis* L.
PL, Wrocław, meadow community on the embankment area,
left bank of the Widawa river,
51°08'21,78"N 017°05'58,39"E, 118 m a.s.l.; AK
199. *Lathyrus sylvestris* L.
PL, Wrocław, meadow community on the inter-embankment area,
left bank of the Widawa river,
51°08'30,76"N 017°05'53,52"E, 117 m a.s.l.; AK
200. *Lotus corniculatus* L.
PL, Wrocław, meadow community on the embankment area,
left bank of the Widawa river,
51°08'17,15"N 017°06'02,48"E, 117 m a.s.l.; AK
201. *Melilotus albus* Medik.
PL, Wrocław, meadow community on the embankment area,
left bank of the Widawa river,
51°08'31,96"N 017°05'52,20"E, 118 m a.s.l.; AK
202. *Melilotus officinalis* (L.) Pall.
PL, Wrocław, meadow community on the embankment area,
left bank of the Widawa river,
51°08'30,41"N 017°05'53,41"E, 118 m a.s.l.; AK
203. *Securigera varia* (L.) Lassen
PL, Wrocław, meadow in the inter-embankment area,
left bank of the Odra flood channel, to the E of the Jagiellońskie bridges,
51°07'37,35"N 017°04'53,58"E, 115 m a.s.l.; AK
204. *Trifolium arvense* L.
PL, Wrocław, meadow in the inter-embankment area, Odra flood channel,
to the NW of the Bolesław Chrobry bridges,
51°06'54,21"N 017°06'27,50"E, 116 m a.s.l.; AK
205. *Trifolium hybridum* L.
PL, Wrocław, meadow community near the Odra-Widawa canal,
near the Strachociński bridge,
51°06'47,75"N 017°08'01,38"E, 117 m a.s.l.; AK

206. *Vicia villosa* Roth
PL, Wrocław, meadow community on the embankment area,
left bank of the Widawa river,
51°08'20,43"N 017°05'58,65"E, 118 m a.s.l.; AK

Hypericaceae

207. *Hypericum perforatum* L.
PL, dirt road border near the village of Świdnik, Kaczawskie Mts, Sudetes,
Lower Silesia; coll. 1 Sep 2024,
50°53'31,40"N 015°59'35,37"E, 507 m a.s.l.; KJ
208. *Hypericum perforatum* L.
PL, Wrocław, meadow community on the embankment area,
left bank of the Widawa river,
51°08'18,72"N 017°05'59,90"E, 118 m a.s.l.; AK

Lamiaceae

209. *Salvia pratensis* L.
PL, Wrocław, meadow in the inter-embankment area, Odra flood channel,
to the NW of the Bolesław Chrobry bridges,
51°06'54,00"N 017°06'27,57"E, 116 m a.s.l.; AK
210. *Stachys officinalis* (L.) Trevis.
PL, Wrocław, meadow in the inter-embankment area, Odra flood channel,
51°06'41,02"N 017°06'47,58"E, 116 m a.s.l.; AK
211. *Stachys sylvatica* L.
PL, deciduous forest on the right bank of the river,
Nysa Kłodzka river gorge, Bardzkie Mts, Sudetes,
50°30'16,62"N 016°44'39,15"E, 262 m a.s.l.; AK

Lythraceae

212. *Lythrum salicaria* L.
PL, Wrocław, meadow community near the Odra–Widawa canal,
near the Strachociński bridge,
51°06'46,54"N 017°08'03,26"E, 117 m a.s.l.; AK

Malvaceae

213. *Malva alcea* L.
PL, Wrocław, meadow community on the embankment area,
left bank of the Widawa river,
51°08'41,13"N 017°05'45,25"E, 117 m a.s.l.; AK

Onagraceae

214. *Oenothera biennis* L.
PL, Wrocław, meadow community on the embankment area,
left bank of the Widawa river,
51°08'32,00"N 017°05'52,20"E, 118 m a.s.l.; AK

Orobanchaceae

215. *Rhinanthus minor* L.
PL, Wrocław, meadow in the inter-embankment area, Odra flood channel, to the SE of the Bolesław Chrobry bridges,
51°06'46,55"N 017°06'38,44"E, 116 m a.s.l.; AK

Plantaginaceae

216. *Digitalis purpurea* L.
PL, Forest clearing, to the NE of village of Borowice, mixed forest, Giant Mountains (Karkonosze), Sudetes; coll. 31 Aug 2024,
50°47'49,96"N 015°41'11,89"E, 618 m a.s.l.; GW
217. *Digitalis purpurea* L.
PL, Near a forest road, to the S of Wilcza Poręba (part of the town of Karpacz), Giant Mountains (Karkonosze), Sudetes; coll. 14 Aug 2024,
50°45'19,27"N 015°45'34,12"E, 830 m a.s.l.; GW
218. *Digitalis purpurea* L.
PL, edge of the forest, Ołowiane Mts (part of Kaczawskie Mts), Lower Silesia; coll. 1 Sep 2024,
50°54'00,75"N 015°55'49,57"E, 595 m a.s.l.; KJ
219. *Linaria vulgaris* Mill.
PL, Wrocław, Swojczyce, meadow community at the former landfill site,
51°07'35,23"N 017°07'45,83"E, 120 m a.s.l.; AK

Plumbaginaceae

220. *Armeria maritima* (Mill.) Willd. subsp. *elongata* (Hoffm.) Bonnier
PL, Wrocław, meadow in the inter-embankment area, Odra flood channel, to the NW of the Bolesław Chrobry bridges,
51°06'55,33"N 017°06'25,97"E, 116 m a.s.l.; AK

Poaceae

221. *Anthoxanthum odoratum* L.
PL, Wrocław, meadow community on the embankment area, left bank of the Widawa river,
51°08'41,13"N 017°05'45,25"E, 117 m a.s.l.; AK

Resedaceae

222. *Reseda lutea* L.
PL, Wrocław, meadow community on the embankment near the Odra–Widawa canal,
51°06'39,67"N 017°07'59,92"E, 119 m a.s.l.; AK

Rosaceae

223. *Crataegus monogyna* Jacq.
PL, Wrocław, field thickets close to the northern city border,
51°10'55,04"N 017°00'30,05"E, 115 m a.s.l.; GW

224. *Filipendula ulmaria* (L.) Maxim.
PL, dirt road border near the village of Świdnik, Kaczawskie Mts, Lower Silesia; coll. 1 Sep 2024,
50°53'31,40"N 015°59'35,37"E, 507 m a.s.l.; KJ
225. *Rosa canina* L.
PL, thickets over the Widawa river, left bank, Wisznia Mała Commune, Trzebnica County, Lower Silesian Voivodeship;
51°11'24,77"N 017°00'44,19"E, 113 m a.s.l.; GW
226. *Sanguisorba minor* Scop.
PL, Wrocław, meadow in the inter-embankment area, Odra flood channel, to the NW of the Bolesław Chrobry bridges,
51°06'54,21"N 017°06'27,50"E, 116 m a.s.l.; AK
227. *Sanguisorba officinalis* L.
PL, dirt road border near the village of Świdnik, Kaczawskie Mts, Lower Silesia; coll. 1 Sep 2024,
50°53'31,40"N 015°59'35,37"E, 507 m a.s.l.; KJ
228. *Sanguisorba officinalis* L.
PL, Wrocław, meadow in the inter-embankment area, Odra flood channel, to the NW of the Bolesław Chrobry bridges,
51°06'54,81"N 017°06'26,98"E, 116 m a.s.l.; AK

Rubiaceae

229. *Galium verum* L.
PL, Wrocław, meadow community on the embankment area, right bank of Odra flood channel, to the E of the Jagiellońskie bridges,
51°07'41,32"N 017°04'46,10"E, 119 m a.s.l.; AK

Scrophulariaceae

230. *Verbascum phlomoides* L.
PL, Wrocław, meadow community on the inter-embankment area, left bank of the Widawa river,
51°08'30,34"N 017°05'54,23"E, 116 m a.s.l.; AK

COLLECTORS

- KH Katarzyna Hage MEng
KJ Klemens Jakubowski MSc
AK Anna Kałuża MSc
GW Grzegorz Wójcik MSc

BIBLIOGRAPHY

Catalogue of Life: <http://www.catalogueoflife.org/>

Euro+Med PlantBase: <http://www.europlusmed.org>

Huxley A., 1999. The New Royal Horticultural Society Dictionary of Gardening. Vol. 1–4, The Royal Horticultural Society.

IPNI (2024). International Plant Names Index. Published on the Internet <http://www.ipni.org>, The Royal Botanic Gardens, Kew, Harvard University Herbaria & Libraries and Australian National Botanic Gardens.

POWO 2024. Plants of the World Online. Facilitated by the Royal Botanic Gardens, Kew. Published on the Internet; <https://powo.science.kew.org>

Stevens, P.F. 2022 onwards. Angiosperm Phylogeny Website. Version 14, July 2017. <http://www.mobot.org/MOBOT/research/APweb/>

World Flora Online: <http://www.worldfloraonline.org>

Attention!

Since the endorsement of the Convention on Biological Diversity (Rio de Janeiro 1992), Article 15 has been of special interest to the botanic gardens, particularly regarding the annual seed-exchange. The Botanical Garden of Medicinal Plants (BGMP) assumes that all recipients of seeds or any parts of plants for propagation offered in our Index Seminum as well as generally from the plant collections of the BGMP use them in a manner that does not violate the Convention.

The BGMP supplies plant material exclusively under the following conditions:

1. The material, without any exception, is used for scientific research, species conservation, education and public relations, with no commercial intent. The recipient is obliged to document and preserve information relating to the material appropriately.
2. In case the material obtained from the BGMP is intended for commercial use, written permission must be obtained from the BGMP. The recipient commits him/herself to appropriately sharing any benefits arising from this use with the countries of origin.
3. It is not allowed to pass the material on to a third party without written permission from the BGMP. The BGMP requests a citation of the material's origin in any publication resulting from the material provided by the BGMP, as well as automatically providing a copy of the publication to the BGMP.

By ordering seeds from the BGMP, the recipient accepts and pledges to respect the above conditions.

DESIDERATA 2024/2025

Please order no more than 25 species.

We do not provide a phytosanitary certificate.

Deadline for orders: 31st March 2025.

Desiderata should be sent to our address (preferred e-mail):

**BOTANICAL GARDEN OF MEDICINAL PLANTS
DEPARTMENT OF PHARMACEUTICAL BIOLOGY AND
BIOTECHNOLOGY
WROCLAW MEDICINAL UNIVERSITY
Kochanowskiego 10–14
51-601 WROCLAW
POLAND**

or by e-mail: malgorzata.stachura@umw.edu.pl

Your address:

--